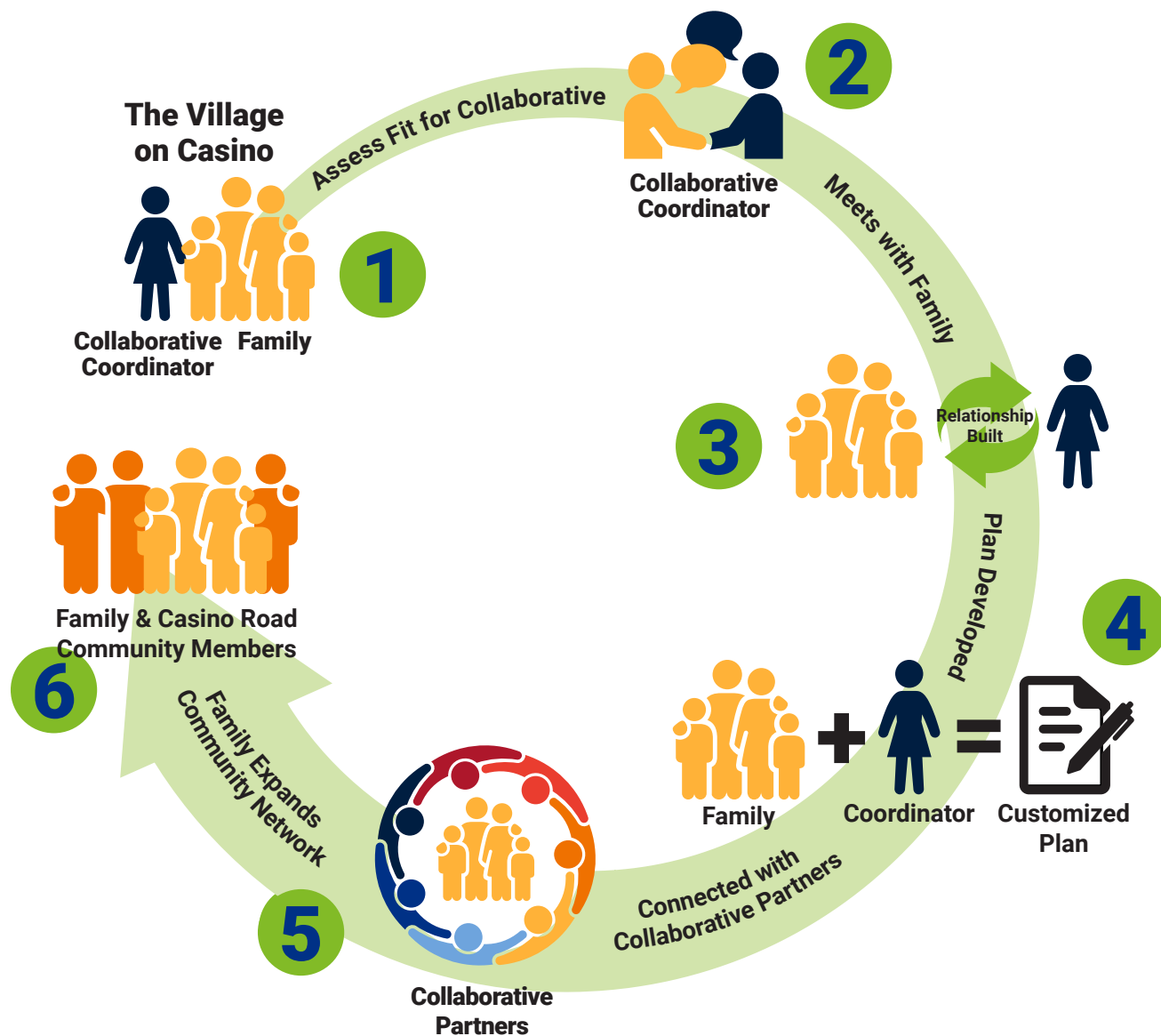


# ALL FAMILIES ARE READY

Creating equitable opportunities for all Casino Road families.



The Casino Road All Families Are Ready Collaborative is one of the action teams of a larger neighborhood initiative called Connect Casino Road.

The Collaborative serves families with young children who come to The Village, the physical hub of the initiative, located on Casino Road in South Everett. The Village offers a variety of family support services including adult education, learning opportunities, early childhood education, and afterschool care.

The Collaborative has a coordinator who serves as the point of contact for families.

- 1** Family comes to The Village to receive services for the adult, the child, or both and is greeted by the Casino Road Connect Collaborative Coordinator.
- 2** If family has a young child, prenatal-age 8, coordinator assesses whether they would be a good fit for All Families Are Ready CORE Collaborative.
- 3** Collaborative Coordinator meets with family and builds relationship.
- 4** Together, Coordinator and family develop customized plan with goals at 3, 6, and 12 months.
- 5** Coordinator connects family to Collaborative partners within Connect Casino Road and broader Snohomish County communities to help achieve goals outlined in family plan.
- 6** Family expands community network to other partners, peers, and people both at The Village and in Snohomish County to ultimately build a deeper sense of community on Casino Road.

## COLLABORATIVE PARTNERS

Everett Community College  
YMCA (Mukilteo Branch)

ChildStrive  
Casa Latina  
Community Foundation of Snohomish County

Goodwill Industries  
Community Health  
Center of Snohomish County

United Way of Snohomish County