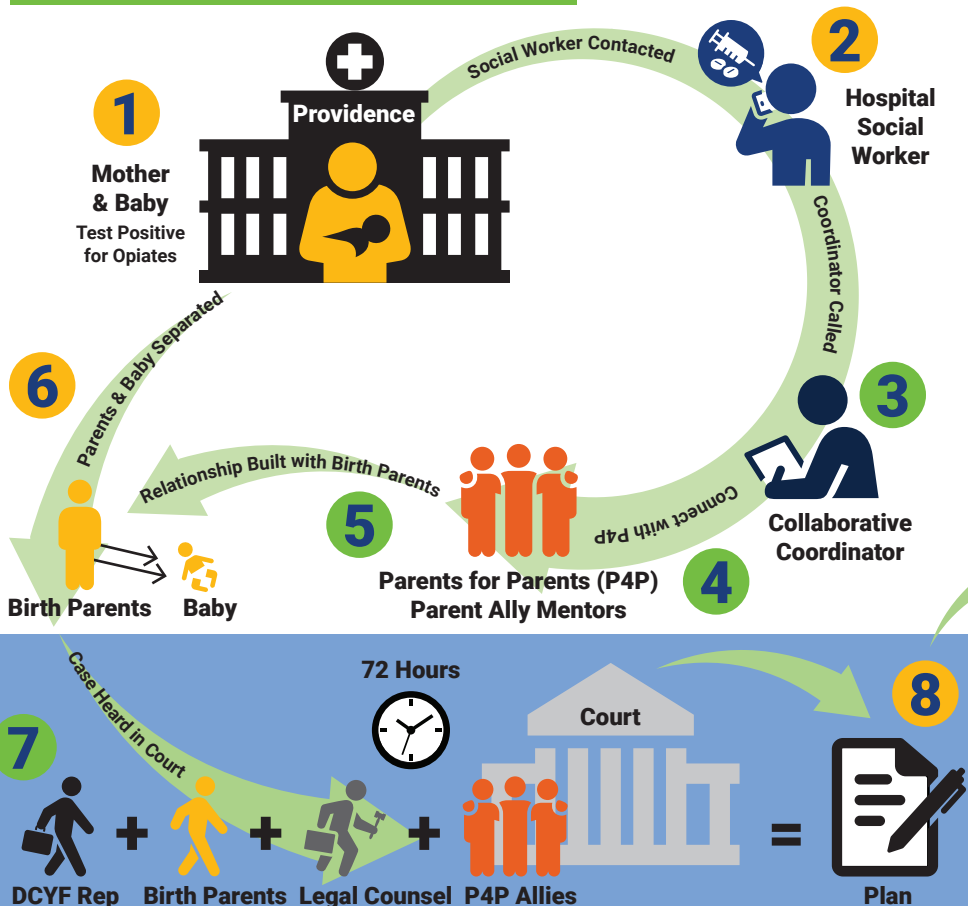


HOMeward HOUSE

Nurturing the vital parent-child bond in the face of crisis, treatment, and recovery.

HOW THE COLLABORATIVE WORKS



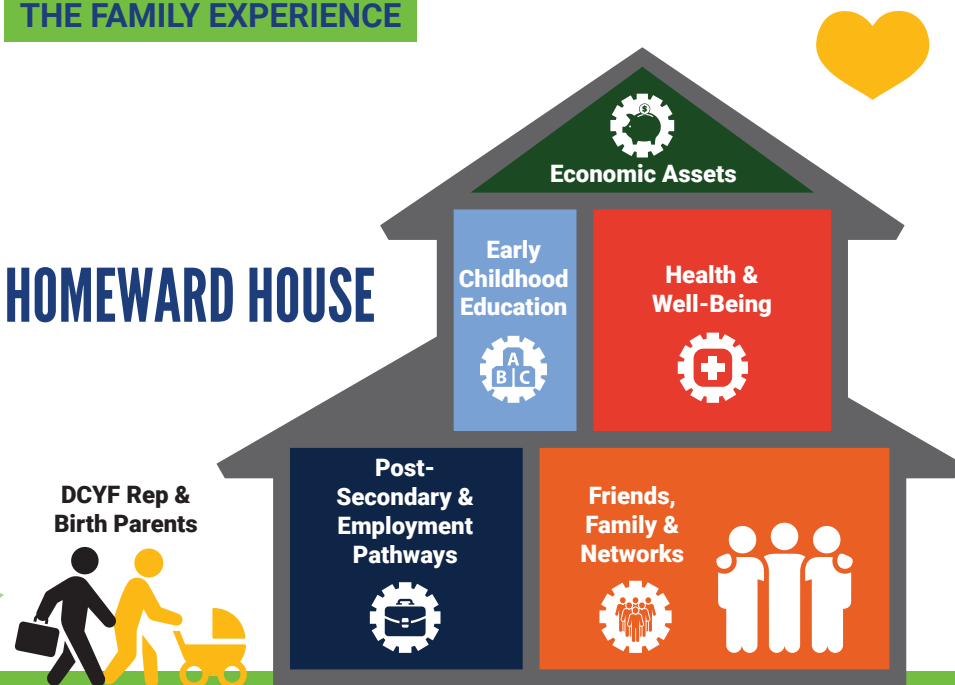
Entry point is Providence Regional Medical Center in Everett.

- 1 Mother and baby test positive for opiates.
- 2 Hospital social worker is contacted.
- 3 Hospital social worker calls Collaborative coordinator.
- 4 Coordinator connects parents to parent ally mentors through Parents for Parents (P4P) at YWCA.
- 5 P4P mentors with lived experience build relationship with birth parents.
- 6 Child is separated from birth parents.
- 7 Within 72 hours, case is heard in court, with support of P4P allies.
- 8 Plan is developed with the influence of legal counsel, a Department of Children, Youth and Families (DCYF) representative, and the parent ally mentor. Through this collaborative approach, family's plan includes Homeward House.

- Existing steps, navigated alone in our current, confusing system and culminating in a plan without family input.
- Additional, new steps indicating the work of Homeward House Collaborative that help both baby and family.

THE FAMILY EXPERIENCE

HOMeward HOUSE



Homeward House is a house in Everett where all five focus areas—Post-Secondary & Employment Pathways, Early Childhood Education, Economic Assets, Social Capital and Health & Well-Being—exist in one physical location.

- Birth parents and baby have supervised visitation in a single-setting, allowing for an environment more conducive to bonding and attachment.
- Collaborative services are provided onsite, reducing potential barriers to access services. This can include parenting classes, infant massage, and mental health services.

ANTICIPATED OUTCOMES

1. Child physical and emotional health develops appropriately.
2. Parent is motivated to climb career ladder.
3. Family is empowered and stable.
4. Family is connected with economic, social, and/or other supports.
5. Educational success becomes a core family value.

COLLABORATIVE PARTNERS

YWCA Seattle | King | Snohomish
 Parents for Parents
 Snohomish Health District
 Center for Human Services
 Providence Regional Medical
 Center Everett
 Interfaith Association of
 Northwest Washington
 YWCA- Shelter Plus Care &
 Project Reunite

Catholic Community Services
 Snohomish County Superior
 Court, Family & Juvenile
 Court Improvement Program,
 Denney Juvenile Justice
 Center (DJJC)
 Sherwood Community Services
 Domestic Violence Services
 Table of Ten & Superior
 Court Judges

ChildStrive
 DSHS-Children's Administration
 Early Intervention Program
 Housing Hope
 Alliance for Child Welfare
 Excellence University of
 Washington
 Bridgeways-Employment Services
 Ideal Option
 United Way of Snohomish County