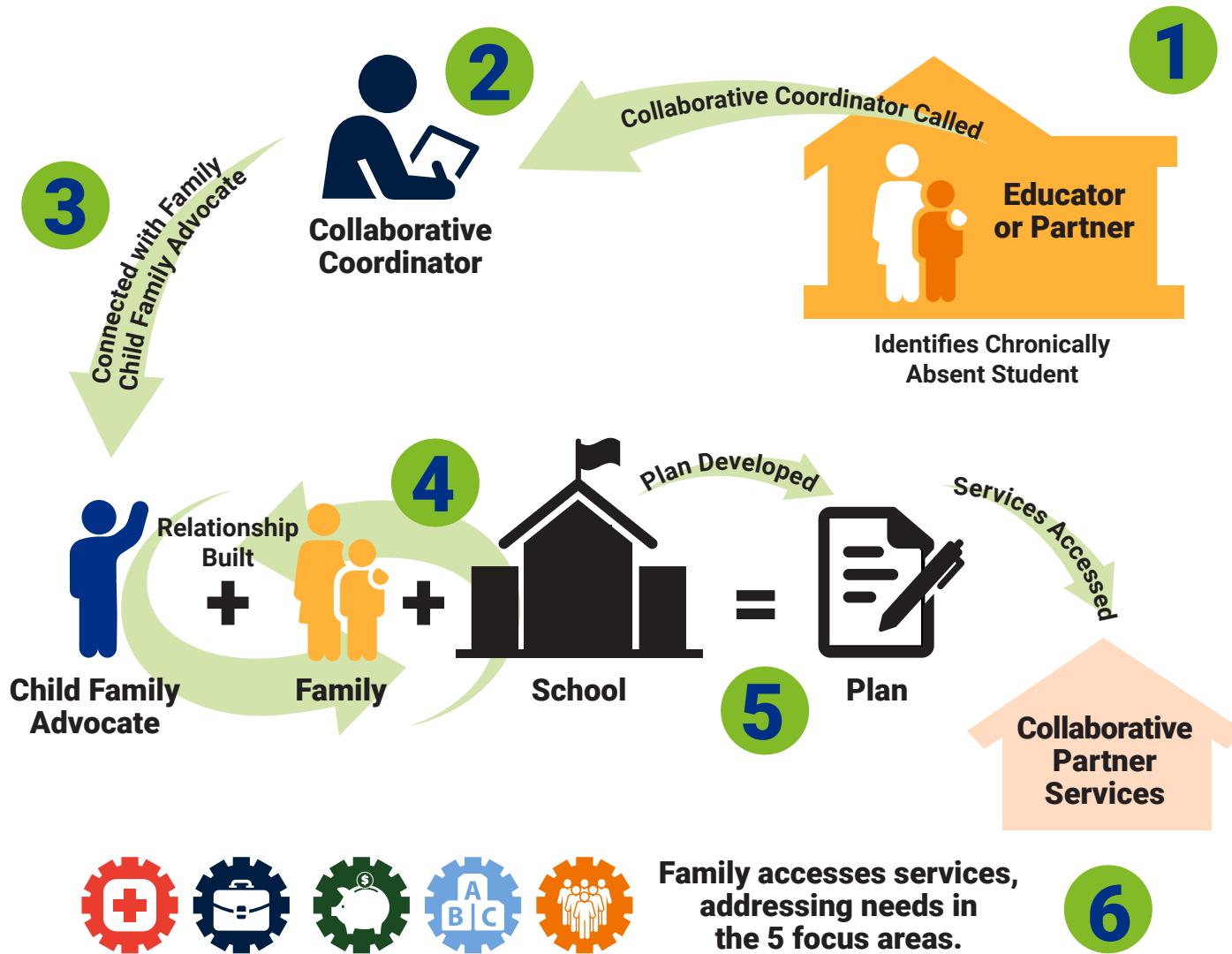


IMPROVING SCHOOL ATTENDANCE FOR FAMILIES IN TRANSITION

Improving educational outcomes for families experiencing homelessness



This Collaborative serves families within the Everett Public Schools boundaries. There are seven entry points—partners who connect families to this Collaborative: Interfaith Family Shelter, YWCA, Domestic Violence Services, Housing Hope, Homage Senior Services, Everett Gospel Mission, and Schools in Everett School District.

- 1 Concerned educators or Collaborative partners identify a chronically absent* student experiencing transition (*missing 10% or more of the school year)
- 2 Educator or partner calls Collaborative coordinator.
- 3 Collaborative coordinator connects family with best-suited Child Family Advocate.
- 4 Each entry point has a Collaborative-paid staff position called a Child Family Advocate who builds relationship with student, caregiver, and school.
- 5 As a team, the family, Child Family Advocate, and school develop a customized family plan.
- 6 Family accesses services that meet their needs in the Collaborative's five focus areas.

ANTICIPATED OUTCOMES

- Child is ready for school, takes charge of his/her learning, and is on track for future academic success.
- Caregiver is equipped to climb career ladder.
- Family is equipped to lead a healthy lifestyle.
- Caregiver has capacity & skills to successfully navigate their community systems & support their children to do the same.
- Family is empowered and stable.

COLLABORATIVE PARTNERS

Housing Hope
Providence Institute
for Health
Boys and Girls Clubs
Amerigroup Washington
YWCA
Interfaith Family Shelter

Everett Gospel Mission
Domestic Violence Services
Parent Trust for
Washington Children
Homage Senior Services
College of Hope
Everett Public Schools

ChildStrive
Tomorrow's Hope Child
Development Center
Edmonds Community
College
Workforce Snohomish

Refugee and Immigrant
Services Northwest
HopeWorks
Snohomish County Early
Learning Coalition
YMCA

Everett Police Department
United Way of
Snohomish County
WorkSource
Snohomish County Early
Learning Coalition